



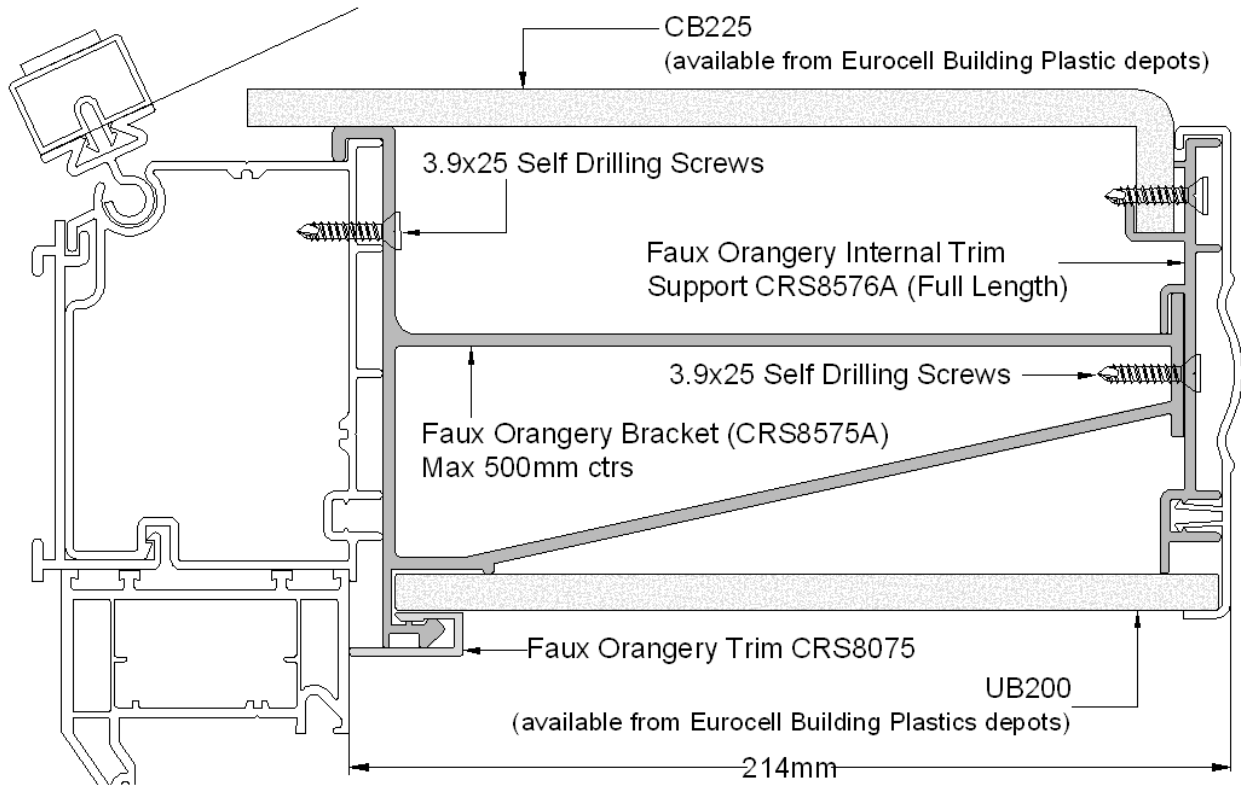
All together better

## LUSO INSTALLATION NOTES



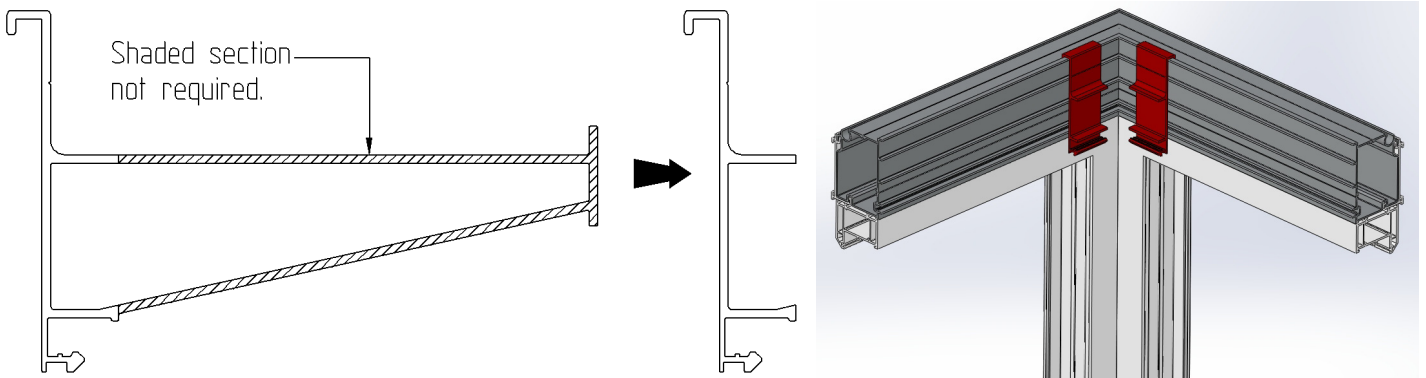
# Lusso Installation Notes

## Cross Section

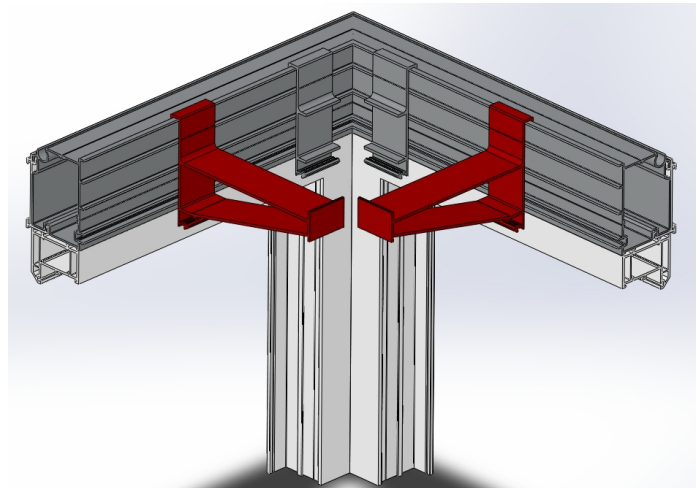
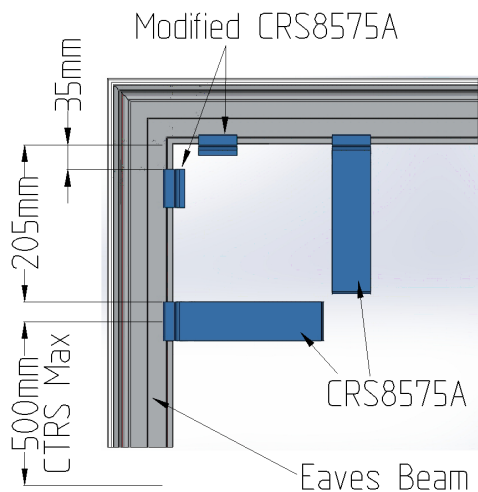


## Installation Notes

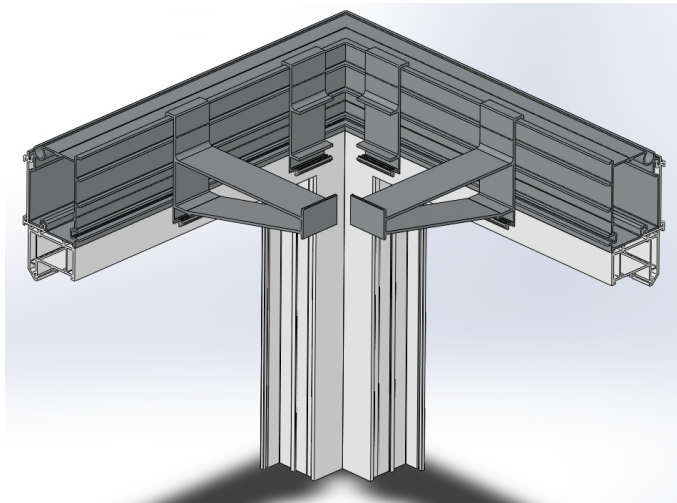
- Faux Orangery Brackets (CRS8575A) should be positioned every 300 to 500mm centres.
- In the corners, 2 off CRS8575A Brackets need to be modified as shown below.



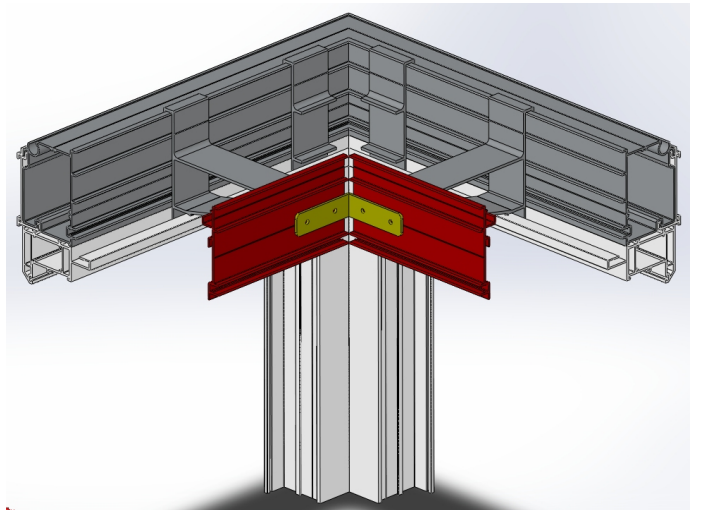
- The Positioning of the Brackets in the corners should be as follows.



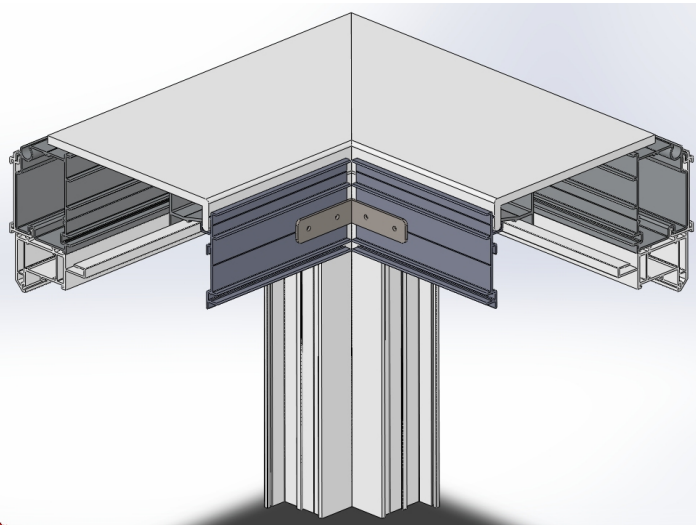
Once all brackets are in place screw them into position using 3.9x25 self drilling screws.



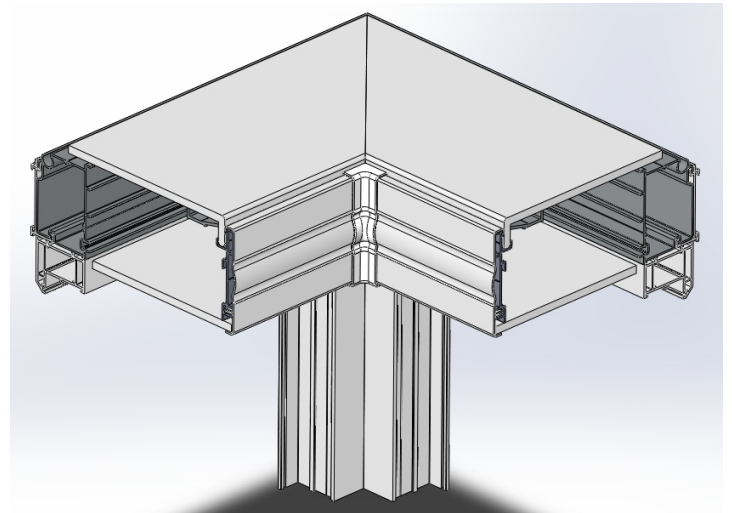
Locate the Internal Trim Support (CRS8576A) and screw into place using 3.9x25 self drilling screws. Once fixed locate and screw into position the Eaves Beam Cleat (CRS8657S) at each Internal Trim Support intersection.



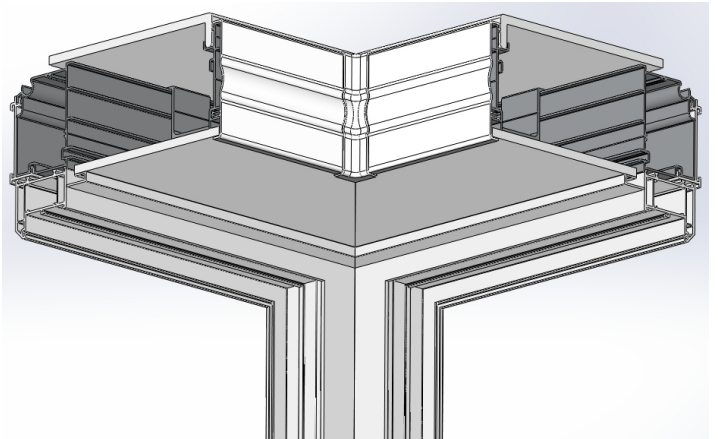
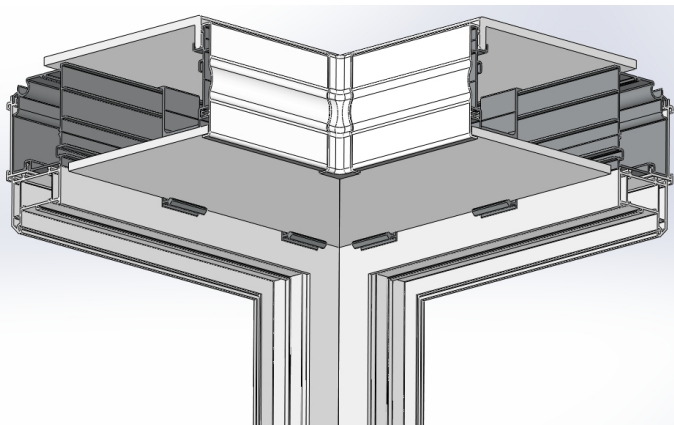
Locate the CB225 Capping board and screw into position.



Offer up the UB200 under cladding and clip the Ring Beam Internal Trim into place.



Clip into position the Faux Orangery Trim. The corners can be either mitred or square cut.



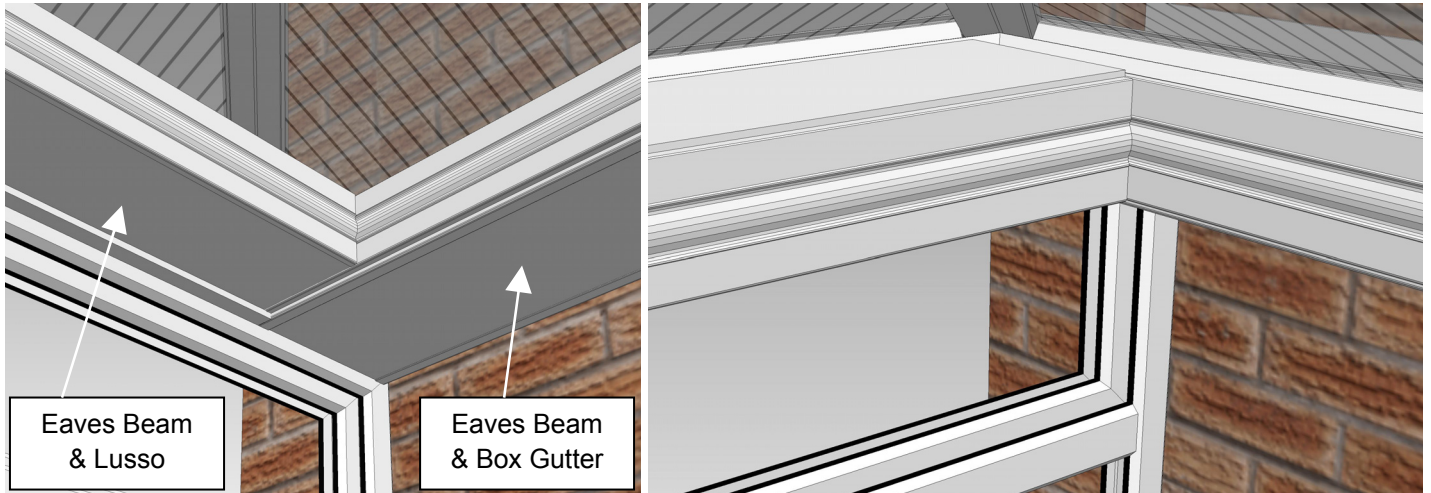


# Lusso with Box Gutters

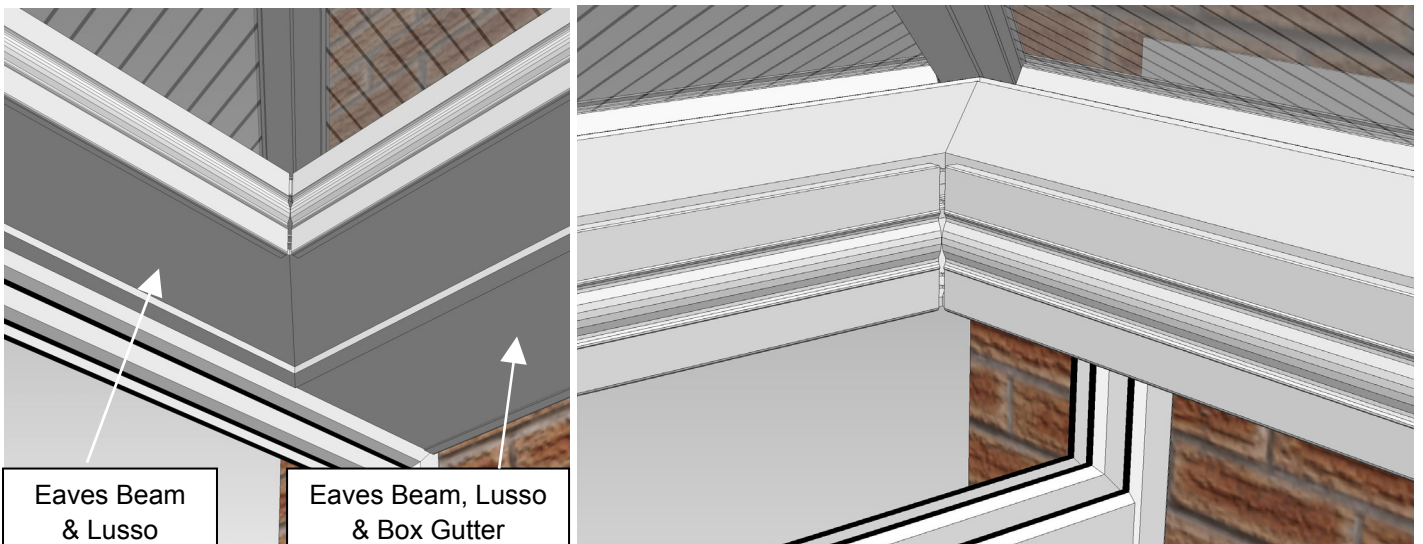
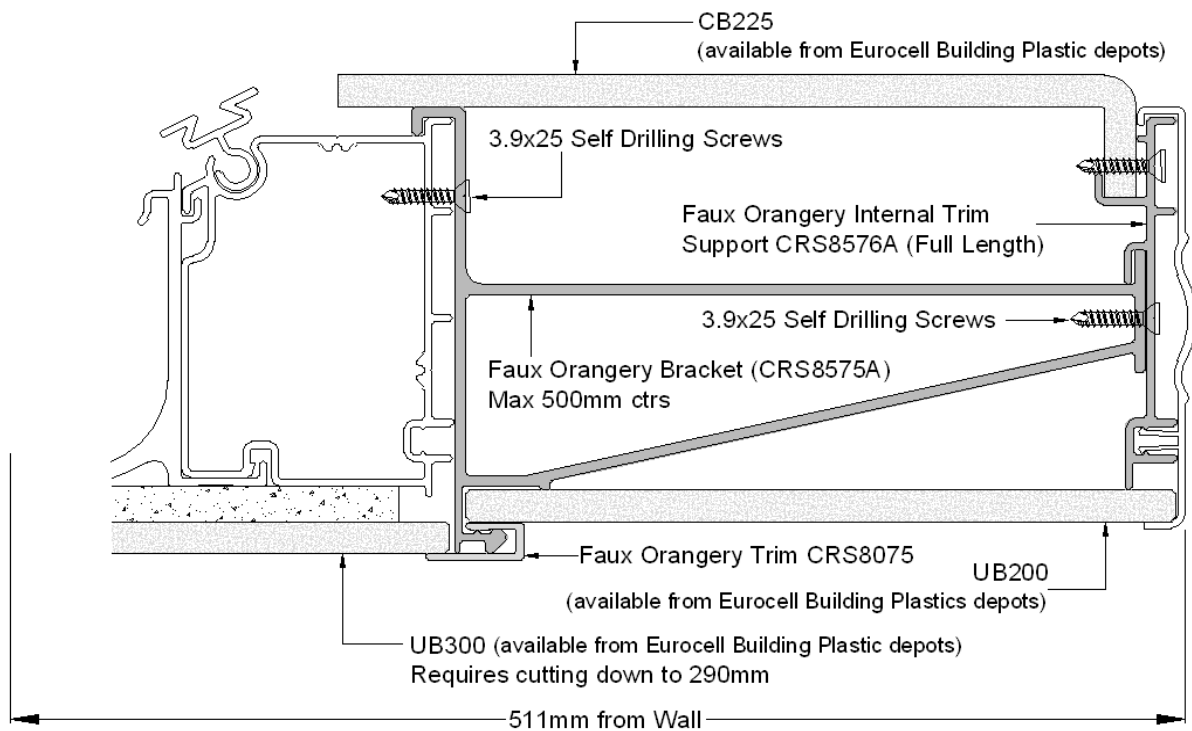
## Standard Box Gutter

There are two options available when a conservatory has a Box Gutter.

**OPTION 1** – Lusso butts up to the Eaves Beam on the Box Gutter as show below.



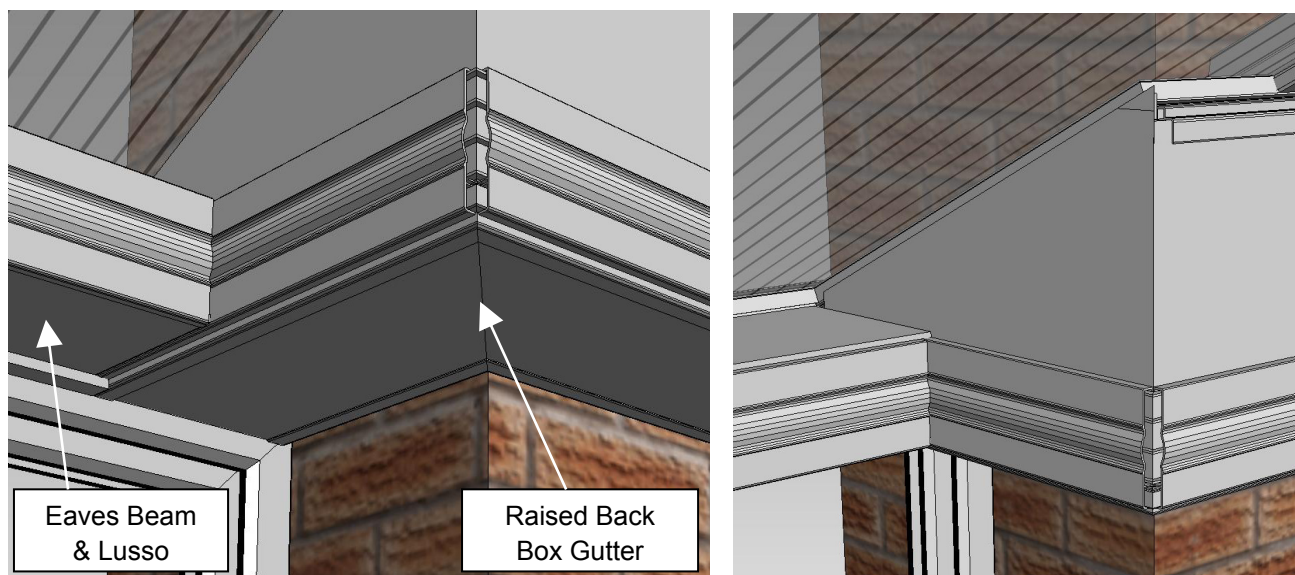
**OPTION 2** – Lusso and the Eaves Beam on the Box Gutter as shown below.



## **Raised Back Box Gutter**

There are two options available when a conservatory has a Raised back Box Gutter.

**OPTION 1** – Lusso butts up to the Raised back Box Gutter as shown below.



**OPTION 2** – Lusso locates onto the Raised Back Box Gutter as shown below.

